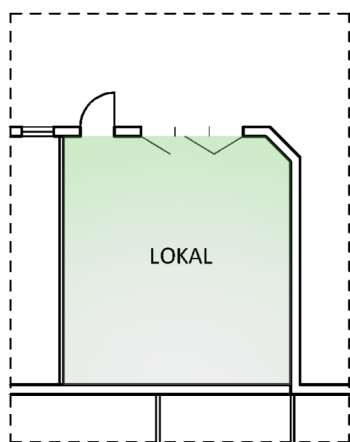


LOKAL 5

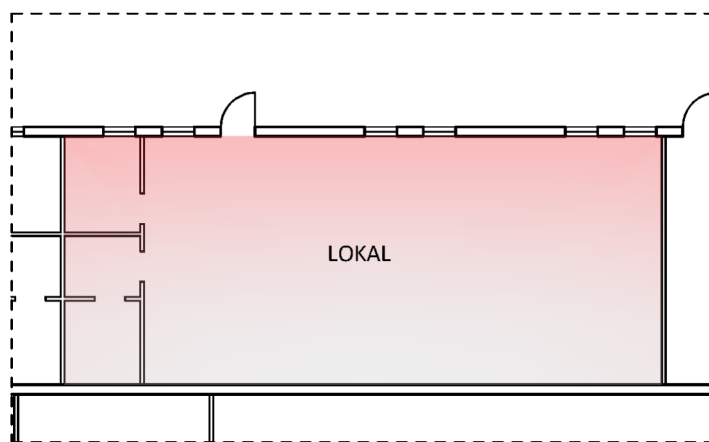
AREA	
ENTRÉPLAN	38.0m ²
<hr/>	
TOTAL YTA	38.0m ²



ENTRÉPLAN

LOKAL 6

AREA	
ENTRÉPLAN	115.0m ²
<hr/>	
TOTAL YTA	115.0m ²



ENTRÉPLAN

